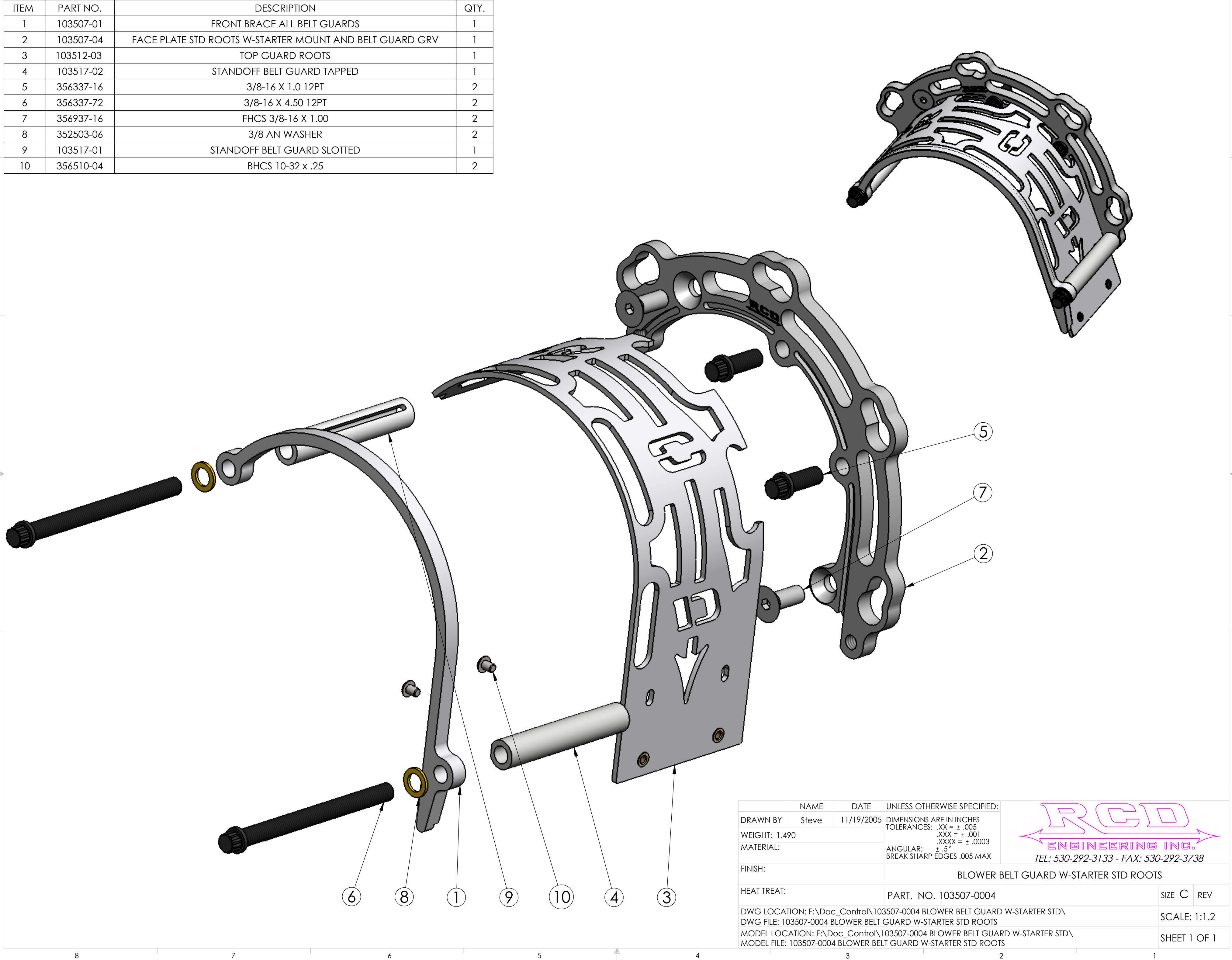



ITEM	PART NO.	DESCRIPTION	QTY.
1	103507-01	FRONT BRACE ALL BELT GUARDS	1
2	103507-04	FACE PLATE STD ROOTS W-STARTER MOUNT AND BELT GUARD GRV	1
3	103512-03	TOP GUARD ROOTS	1
4	103517-02	STANDOFF BELT GUARD TAPPED	1
5	356337-16	3/8-16 X 1.0 12PT	2
6	356337-72	3/8-16 X 4.50 12PT	2
7	356937-16	FHCS 3/8-16 X 1.00	2
8	352503-06	3/8 AN WASHER	2
9	103517-01	STANDOFF BELT GUARD SLOTTED	1
10	356510-04	BHCS 10-32 x .25	2



NAME	DATE	UNLESS OTHERWISE SPECIFIED:	 TEL: 530-292-3133 - FAX: 530-292-3738
DRAWN BY	Steve	11/19/2005	
WEIGHT:	1.490	DIMENSIONS ARE IN INCHES	
MATERIAL:		TOLERANCES: .XX = ± .005	
		.XXX = ± .001	
		.XXXX = ± .0003	
		ANGULAR: ± .5°	
		BREAK SHARP EDGES .005 MAX	
FINISH:	BLOWER BELT GUARD W-STARTER STD ROOTS		
HEAT TREAT:	PART. NO. 103507-0004		SIZE C REV
DWG LOCATION: F:\Doc_Control\103507-0004 BLOWER BELT GUARD W-STARTER STD\			SCALE: 1:1.2
DWG FILE: 103507-0004 BLOWER BELT GUARD W-STARTER STD ROOTS			SHEET 1 OF 1
MODEL LOCATION: F:\Doc_Control\103507-0004 BLOWER BELT GUARD W-STARTER STD\			
MODEL FILE: 103507-0004 BLOWER BELT GUARD W-STARTER STD ROOTS			